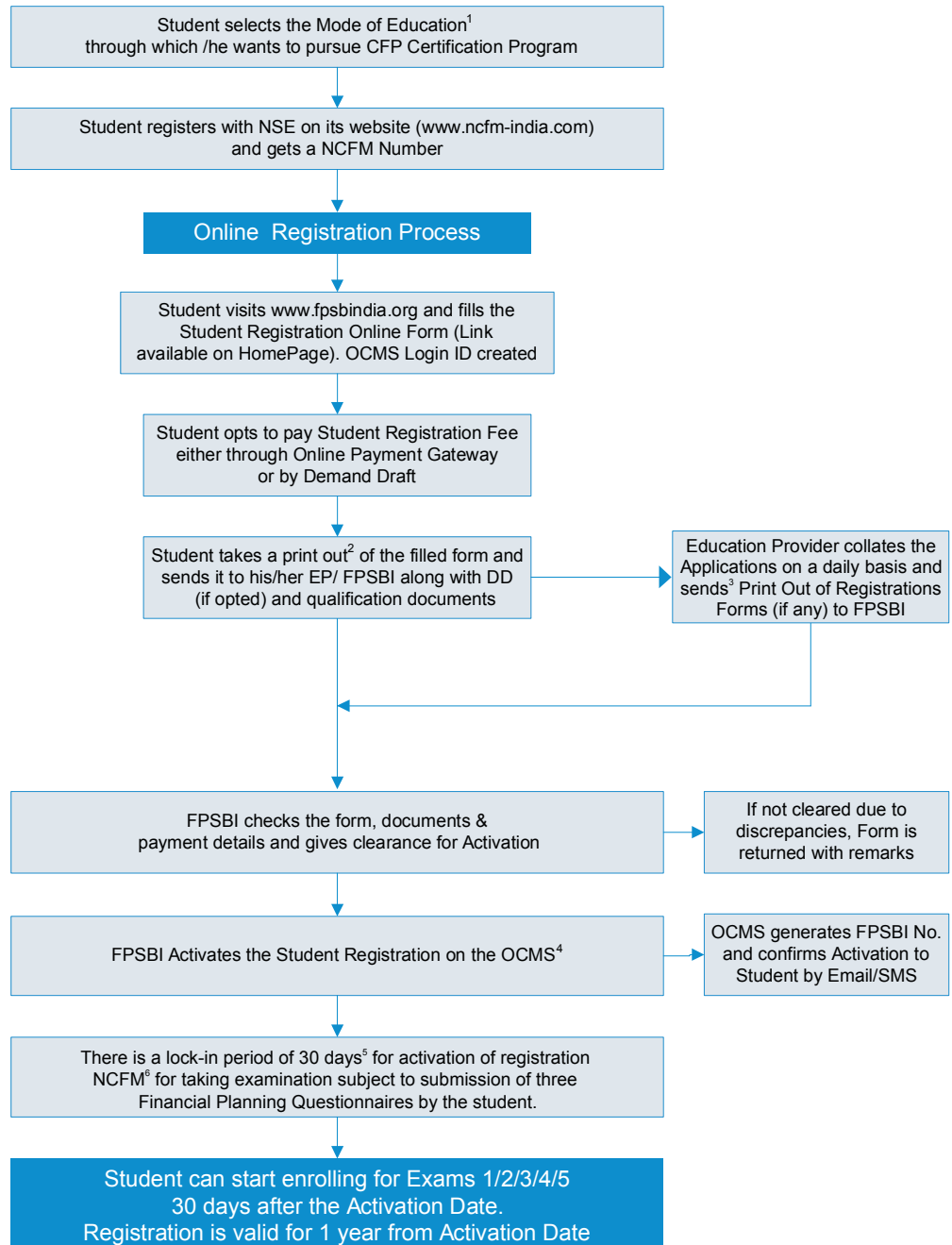


# Student Registration



## Notes:

1. Mode of Education viz. Education Provider or Self Study For the list & contact details of FPSB India Education Providers kindly visit [www.fpsbindia.org](http://www.fpsbindia.org)
2. Print Out of the Form is available in the Fees Paid Profile under the Student Login facility
3. "Student Registration Form", Operations Department, FPSB India, 702, 7th Floor, Leela Business Park, Andheri-Kurla Road, Andheri (E), Mumbai-59
4. Online Certification Management System. Link on [www.fpsbindia.org](http://www.fpsbindia.org) Homepage
5. Lock-in period of 30 days is extended in case Financial Planning Questionnaires is not submitted by the student.
6. NSE's Certification in Financial Markets